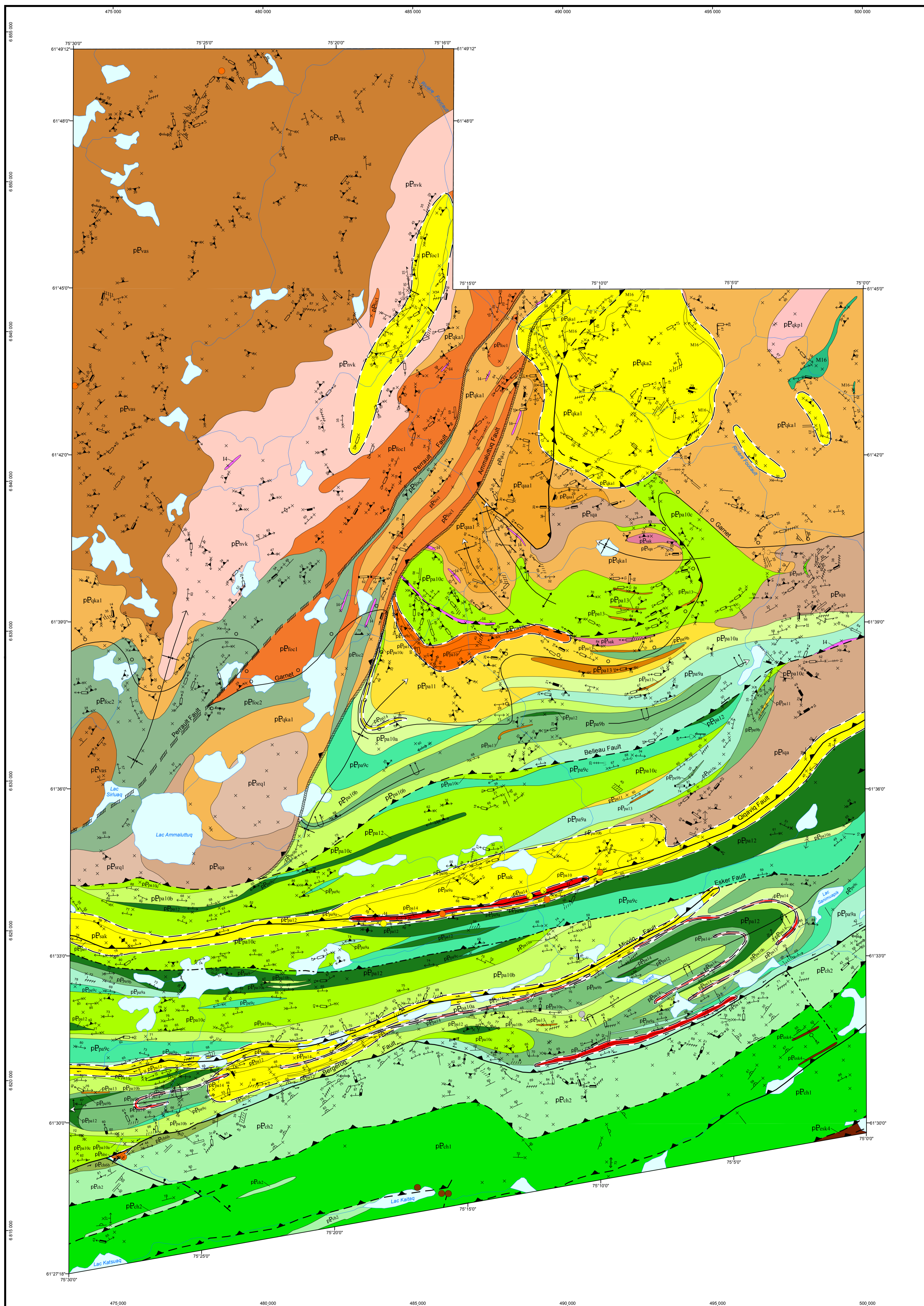


# Geology of the Parent Lake Area, Ungava Orogen, Nunavik, Quebec, Canada



## STRATIGRAPHIC LEGEND

### CHURCHILL PROVINCE UNGAVA OROGEN NORTHERN DOMAIN PALEOPROTEROZOIC

- Sirfuaq Suite**  
pP<sub>sv1</sub> Massive and magnetic gabbro and gabbroinite
- Iqilat Suite**  
pP<sub>sq</sub> Heterogeneous, massive to foliated gabbro and diorite
- Nivlugaq Suite**  
pP<sub>sv</sub> Speckled and foliated quartz diorite
- Foucault Suite**  
pP<sub>sv2</sub> Hornblende porphyritic amphibolite and gabbro  
pP<sub>sv1</sub> Banded garnet porphyroblastic diorite and gabbro
- Vanasse Suite (1858 ± 2 Ma, Machado et al., 1993)**  
pP<sub>sv</sub> Homogeneous, massive to foliated gabbro and gabbroinite
- Qikirtalapak Granite (1870 ± 15 Ma, Parrish, 1989)**  
pP<sub>qg1</sub> Massive granite
- Sanimuapik Suite (1898 ± 12 Ma, Parrish, 1989)**  
pP<sub>sv</sub> Massive to foliated bluish quartz tonalite
- Qikirtalapak Suite**  
pP<sub>sv2</sub> Heterogeneous, locally layered diorite, amphibolite layers  
pP<sub>sv1</sub> Heterogeneous, locally layered plagioclase porphyritic gabbro; ultramafic rock layers and enclaves
- Qaanaq Complex**  
pP<sub>sv1</sub> Paragneiss and meta-arenite
- Parent Group (1917 Ma, 1874 ± 24 Ma, Machado et al., 1993; Dupuy and Ludden, 1996)**  
pP<sub>sv</sub> Pyrrhotite mudrock, chert and oxide facies iron formation  
pP<sub>sv13</sub> Gabbro sill  
pP<sub>sv11</sub> Polymictic volcanoclastics containing mafic rock fragments  
pP<sub>sv11</sub> Dacite  
pP<sub>sv10</sub> Clinopyroxene porphyritic lava and volcanoclastics  
pP<sub>sv10c</sub> Transitional to calc-alkaline basalt and andesite  
pP<sub>sv10b</sub> Tholeiitic transitional basalt  
pP<sub>sv10a</sub> Tholeiitic basalt  
pP<sub>sv9</sub> Aphyritic basaltic lava and volcanoclastics  
pP<sub>sv9c</sub> Transitional to calc-alkaline basalt  
pP<sub>sv9b</sub> Tholeiitic to transitional basalt  
pP<sub>sv9a</sub> Tholeiitic basalt

### SOUTHERN DOMAIN

- Hubert Formation**  
pP<sub>sv</sub> Polymictic conglomerate and red sandstone
- Lac Esker Suite (1881.5 ± 0.9 Ma, Bleeker et Kamo, 2018; 1870 ± 24 Ma, St-Onge et al., 1992)**  
pP<sub>sv</sub> Gabbro locally containing volcanoclastic rocks and iron formations
- Chukotat Group (1881.5 ± 0.9 Ma, Bleeker et Kamo, 2018; 1870 ± 24 Ma, St-Onge et al., 1992)**  
pP<sub>sv</sub> Altered, hematitized, epidotized and chloritized basalt  
pP<sub>sv2</sub> Pyroxene basalt  
pP<sub>sv1</sub> Olivine porphyritic basalt

## LITHOLOGICAL LEGEND

### PALEOPROTEROZOIC

- I4 Ultramafic rock
- M16 Amphibolite

### PROSPECTIVE ZONE FOR MINERAL EXPLORATION

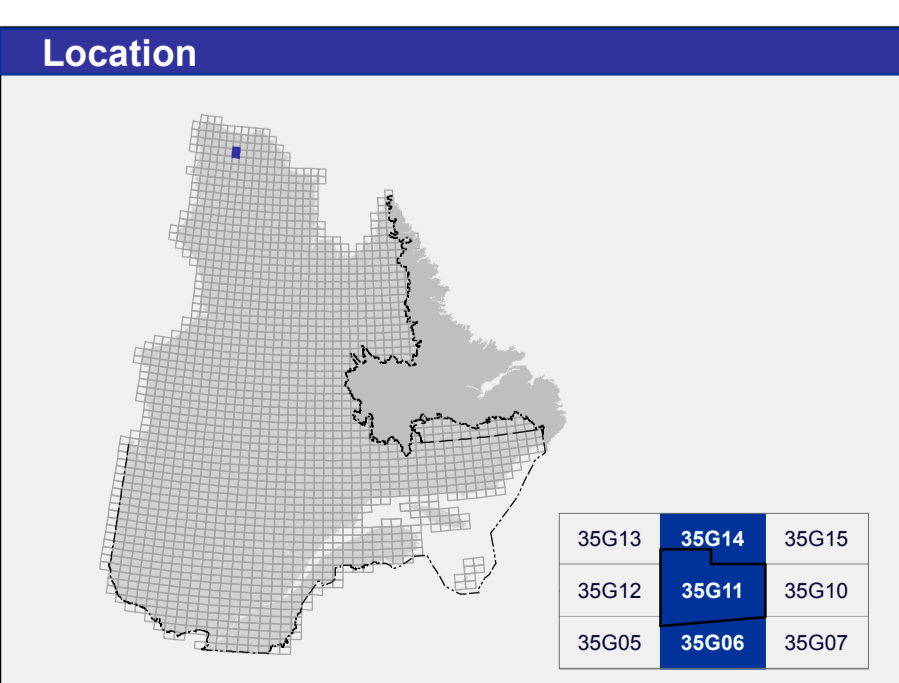
- Copper
- Gold
- Zinc

### SHOWING AND DEPOSIT

- Silver, copper
- Nickel, gold

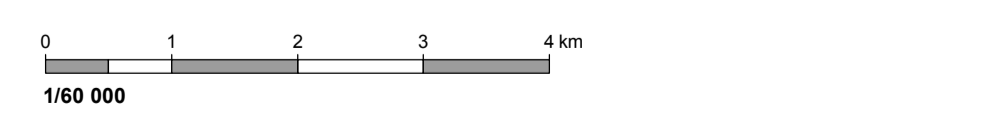
This geological map in PDF format contains layers that group the various elements of the document (geological zones, hydrography, geologic outcrops, etc.). These layers can be displayed or hidden in the "Layers" section of the "Browser Panel" in Adobe Acrobat Reader®.

Symbols and abbreviations used on this map are described in the DV 2014-06 publication of the Ministère de l'Énergie et des Ressources naturelles.



## Metadata

Geodetic reference frame : Ellipsoïde GRS 80  
 Geodetic reference system : NAD 83 compatible avec le système mondial WGS 84  
 Cartographic projection : Mercator transverse universelle (MTU), fuseau 18  
 Original longitude : 75°15'  
 Original latitude : 0°



## Sources

Data : Base de données topographiques et administratives (BDTA 250k)  
 Organization : Ministère de l'Énergie et des Ressources naturelles

## Realization

Geology : Carl Blodéau, Mélanie Beaudette, Guillaume Mathieu (2019)  
 References : Herwet, M. (1984) - DP-85-05  
 Lamotte, D. (2007) - DV 2007-03  
 Roy, C. (1984) - DP-85-15  
 Technical assistance : Karine Allard, Kathleen O'Brien  
 Production : Ministère de l'Énergie et des Ressources naturelles  
 Direction générale de Géologie Québec  
 Distribution : Ministère de l'Énergie et des Ressources naturelles  
 Direction de l'information géologique du Québec

This document has no legal value  
 © Gouvernement du Québec, 3<sup>e</sup> trimestre de 2020

BG 2020-04-C01

Map of the Bulletin géologique: [http://g.mines.gouv.qc.ca/bulletins-geologiques\\_enlacc-parent\\_enf](http://g.mines.gouv.qc.ca/bulletins-geologiques_enlacc-parent_enf)

To obtain the most recent data for this region, we suggest that you consult the geomatics products of Quebec's Geomatics Information System (SIGÉOM)

Bulletin géologique

SIGÉOM  
 Système d'information géomatique du Québec

Énergie et Ressources naturelles  
 Québec