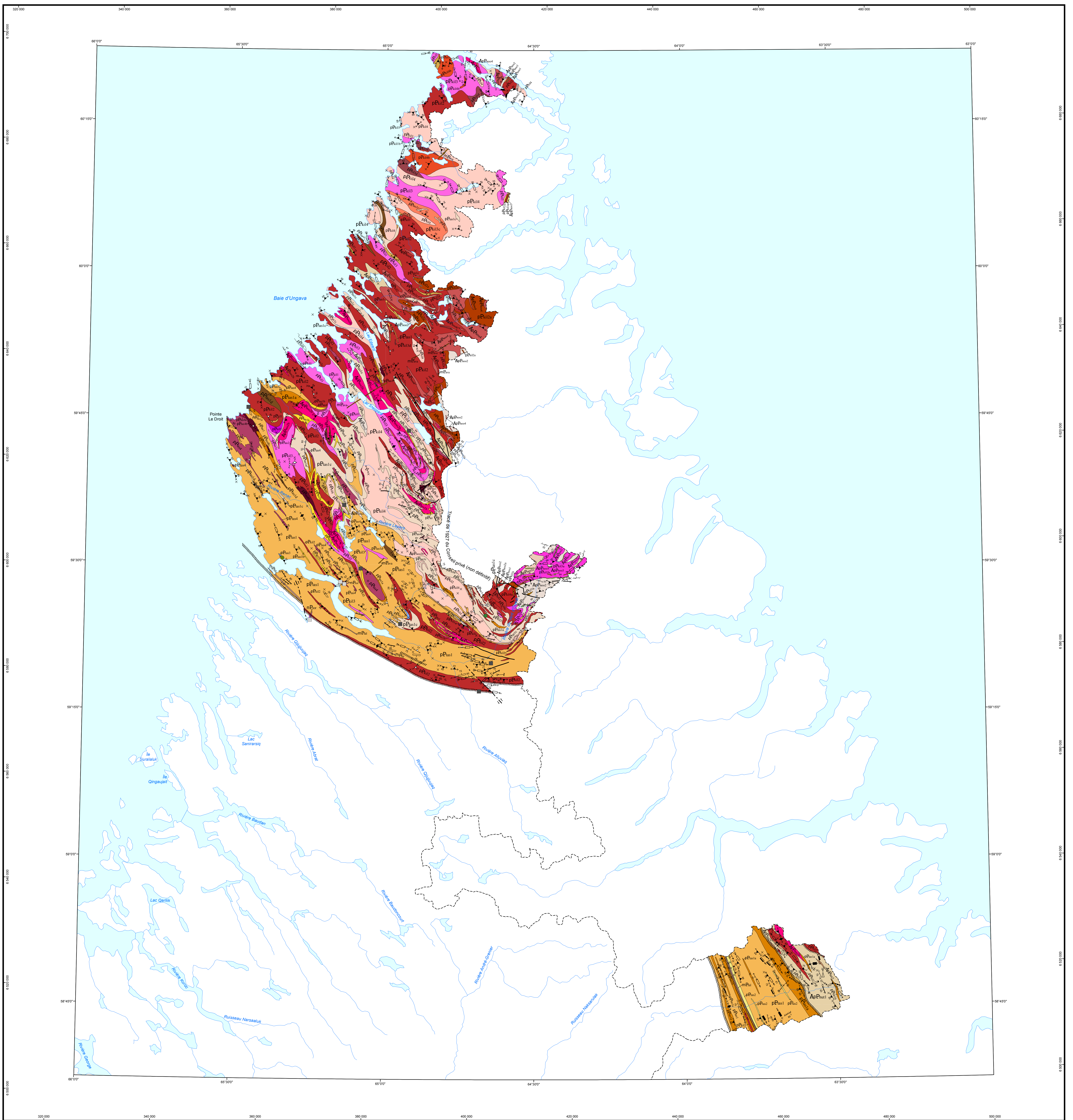


# Geology of the Pointe Le Droit Region, Nain Province and Southeastern Churchill Province, Nunavik, Quebec, Canada



## STRATIGRAPHIC LEGEND

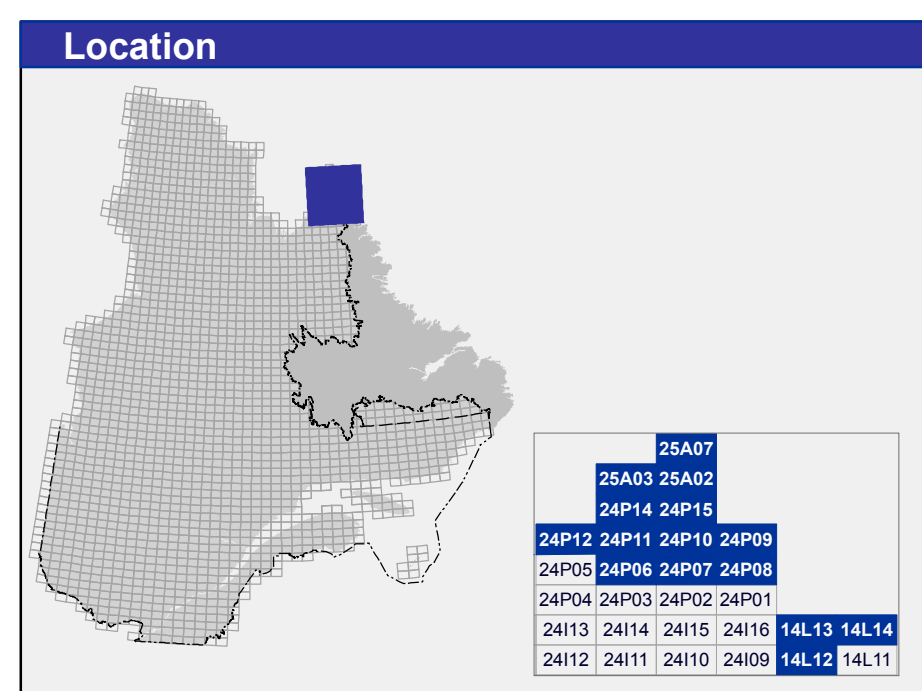
NAIN PROVINCE	
<b>Neoproterozoic</b>	
<b>Torngat Dykes (600 Ma, Dignen et al., 2006)</b>	
<b>mEul</b>	Ultramafic lamprophyre, diamond-bearing kimberlite
<b>Mesoproterozoic</b>	
<b>Asyalk Dykes</b>	
<b>mEul</b>	Massive and subophitic gabbro and gabbro
<b>Falcoz Swarm</b>	
<b>mEul</b>	Subophitic olivine gabbro
<b>Burwell Domain</b>	
<b>Killinek Suite (1910 ± - 1864 ± 2 Ma, Scott, 1996; Scott and Machado, 1996; Scott et al., 1993)</b>	
<b>pEul</b>	Coarse-grained orthopyroxene syenogabbro
<b>pEul</b>	Orthopyroxene quartz monzonite
<b>pEul</b>	Porphyritic mangerite (quartz monzonite)
<b>pEul</b>	Quartz monzonite
<b>pEul</b>	Opalite and charnockite
<b>pEul</b>	Pink granite
<b>pEul</b>	Garnet gabbro
<b>pEul</b>	Porphyritic granodiorite
<b>pEul</b>	Granodiorite and granite
<b>pEul</b>	Orthopyroxene quartz diorite and enderbite
<b>pEul</b>	Quartz diorite and tonalite
<b>pEul</b>	Gabbro
<b>pEul</b>	Gabbroite retrograded to the amphibolite facies
<b>pEul</b>	Massive oxides

Lapere Suite	
<b>pEul</b>	Chlorite schist
<b>Tasiyak Complex (1940 ± - 1843 ± 23 ± 6 Ma, Scott and Gauthier, 1996; Bertrand et al., 1993)</b>	
<b>pEul</b>	Garnet ultramafic gabbro and tonalite
<b>pEul</b>	White garnet tonalite
<b>pEul</b>	White garnet-cordierite granite
<b>pEul</b>	Mafic and calcalkaline rocks
<b>pEul</b>	Quartzite
<b>pEul</b>	Garnet ± sillimanite ± biotite paragneiss, metabasite and diatexite
<b>pEul</b>	Garnet ± sillimanite ± biotite ± cordierite paragneiss, metabasite and diatexite
<b>pEul</b>	Biotite-garnet paragneiss with very few sillimanite
<b>pEul</b>	Rusty paragneiss with approximately 10% sulphides and graphite
<b>pEul</b>	Garnet ± sillimanite ± biotite ± orthopyroxene paragneiss, metabasite and diatexite

ARCHEAN TO PALEOPROTEROZOIC	
<b>Mullon Suite</b>	
<b>ApEul</b>	Orthopyroxene-chloropyroxene-hornblende amphibolite
<b>ApEul</b>	Garnet rock
<b>Woodcock Complex (2801 ± 23 Ma, Scott, 1996a)</b>	
<b>ApEul</b>	Barred gabbro, amphibolite, with several white tonalite intrusions
<b>ApEul</b>	Panogneiss
<b>ApEul</b>	Tonalite, quartz diorite and granodiorite gneiss
<b>ApEul</b>	Granulite gneiss of tonalitic, granodioritic and dioritic composition
<b>ApEul</b>	Hornblende dioritic gneiss
<b>ApEul</b>	Amphibolite

SHOWING AND DEPOSIT	
<b>Metals Substance</b>	
<b>Non-metallic Substance</b>	

Symbols and abbreviations used on this map are described in publication DV 2014-06 of the Ministère de l'Énergie et des Ressources naturelles.



**Metadata**

Geoidic reference frame: EPSG:31470  
 Geoidic reference system: NAD 83 compatible with the world geoidic system WGS 84  
 Cartographic projection: Universal Transverse Mercator (UTM), zone 20  
 Original longitude: 64°30'  
 Original latitude: 0°

**Border**

----- Quebec - Newfoundland and Labrador border (this boundary is not final)

**Sources**

**Data**

Base de données géographiques et administratives (BDCA, 1M)

**Organization**

Ministère de l'Énergie et des Ressources naturelles

**Geology**

Isabelle Lefrançois, Guillaume Mathieu (2017), Van Kranendonk et al. (1995)

**References**

Bertrand, J.M. et al. (1993) - Canadian Journal of Earth Sciences, volume 30  
 Dignen, S. et al. (2006) - Canadian Journal of Earth Sciences, volume 37  
 Scott, D.J. (1996) - Canadian Journal of Earth Sciences, volume 32  
 Scott, D.J. et al. (1993) - Precambrian Research, volume 70  
 Scott, D.J. et al. (1995) - Precambrian Research, volume 70  
 Scott, D.J. et al. (1996) - Geological Survey of Canada, Paper 85-1C  
 Van Kranendonk, M.J. (1992) - Geological Survey of Canada, Open File 2738  
 Van Kranendonk, M.J. (1994) - Geological Survey of Canada, Open File 2628  
 Van Kranendonk, M.J., Warr, R.J. (1994) - Geological Survey of Canada, Open File 2628  
 Van Kranendonk, M.J. et al. (1994) - Geological Survey of Canada, Open File 2628  
 Van Kranendonk, M.J. (1994) - Geological Survey of Canada, Open File 2628  
 Van Kranendonk, M.J., Warr, R.J. (1995) - Geological Survey of Canada, Open File 2628  
 Van Kranendonk, M.J. et al. (1995) - Geological Survey of Canada, Open File 2627

**Technical assistance**

Julie Sauvageau

**Production**

Ministère de l'Énergie et des Ressources naturelles  
 Direction générale de Géologie Québec

**Distribution**

Ministère de l'Énergie et des Ressources naturelles  
 Direction de l'information géographique du Québec

This document has no legal value  
 © Gouvernement du Québec, 2<sup>e</sup> trimestre de 2018

**Realization**

Ministère de l'Énergie et des Ressources naturelles  
 Direction générale de Géologie Québec

**References**

Van Kranendonk, M.J. (1992) - Geological Survey of Canada, Open File 2738  
 Van Kranendonk, M.J. (1994) - Geological Survey of Canada, Open File 2628  
 Van Kranendonk, M.J., Warr, R.J. (1994) - Geological Survey of Canada, Open File 2628  
 Van Kranendonk, M.J. et al. (1994) - Geological Survey of Canada, Open File 2628  
 Van Kranendonk, M.J. (1994) - Geological Survey of Canada, Open File 2628  
 Van Kranendonk, M.J., Warr, R.J. (1995) - Geological Survey of Canada, Open File 2628  
 Van Kranendonk, M.J. et al. (1995) - Geological Survey of Canada, Open File 2627

**Technical assistance**

Julie Sauvageau

**Production**

Ministère de l'Énergie et des Ressources naturelles  
 Direction générale de Géologie Québec

**Distribution**

Ministère de l'Énergie et des Ressources naturelles  
 Direction de l'information géographique du Québec

**Realization**

Ministère de l'Énergie et des Ressources naturelles  
 Direction générale de Géologie Québec

BG 2018-07-C01

Map of the Bulletin géologique : [http://gms.mines.gouv.qc.ca/bulletin-geologique/geologie/pointe-le-droit\\_en/](http://gms.mines.gouv.qc.ca/bulletin-geologique/geologie/pointe-le-droit_en/)

To obtain the most recent data for this region, we suggest that you consult the geomatics products of Québec's Geomatics Information System (SIGÉOM).