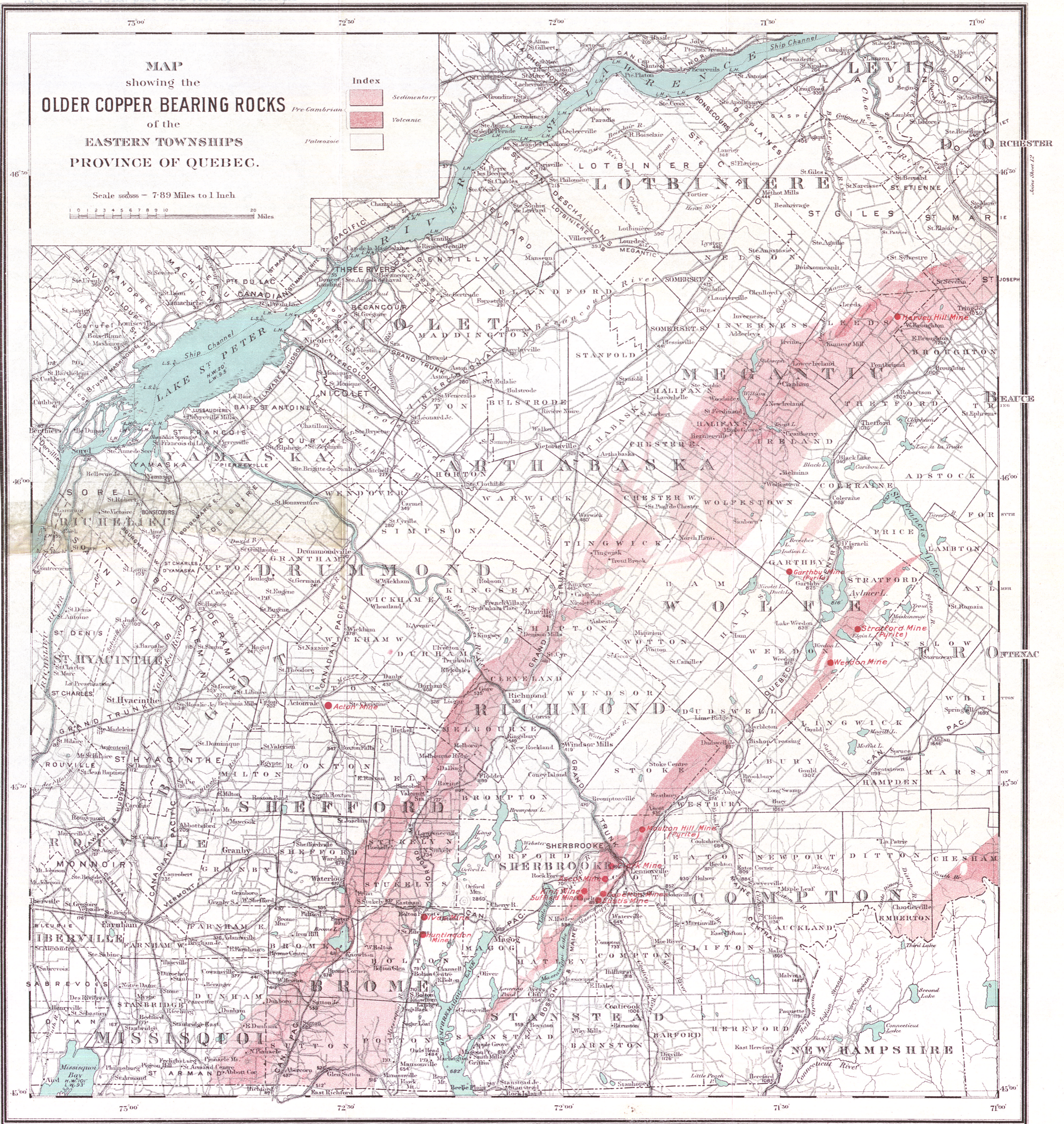


MINES BRANCH

HON. H. MERCIER, MINISTER: S. DUFAULT, DEPUTY-MINISTER;
THEO. C. DENIS, SUPERINTENDENT OF MINES



Base-map from plate, supplied by the Geographer's Branch, Department of the Interior, Ottawa.

With the exception of minor changes in portions of Weedon and Stratford townships, the geological boundaries have been taken from the map published by the Geological Survey of Canada to illustrate the Report on the Copper Deposits of the Eastern Townships by J. A. Dresser, M.A.

To accompany "Report on the Copper Deposits of the Eastern Townships", by J. A. Bancroft, 1915.